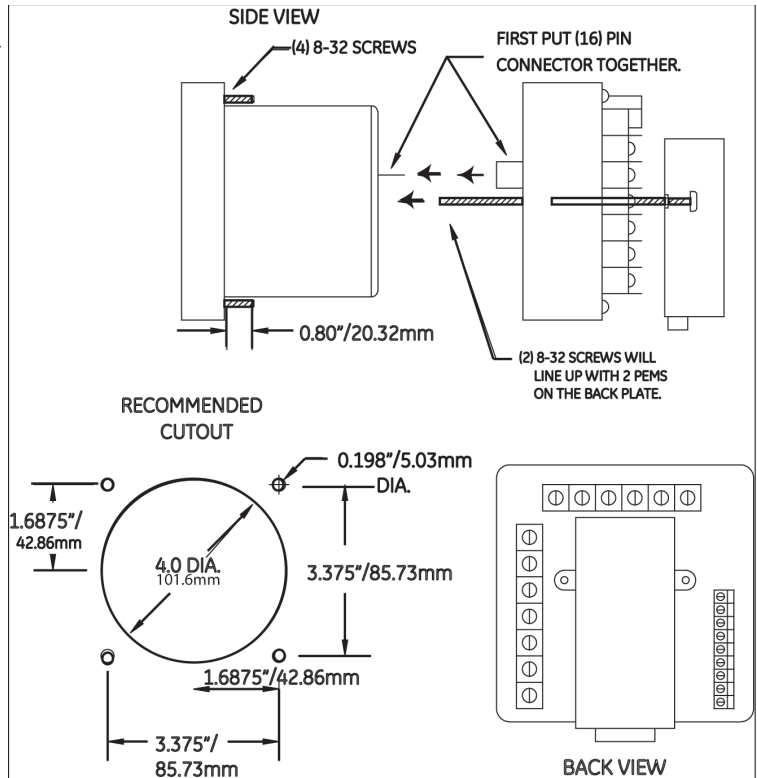
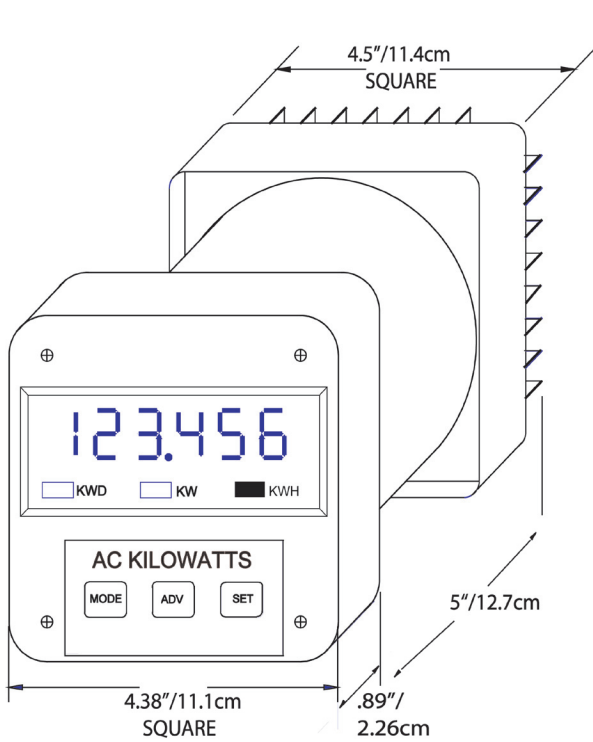


Quick Start Guide for DMWH Series Meters

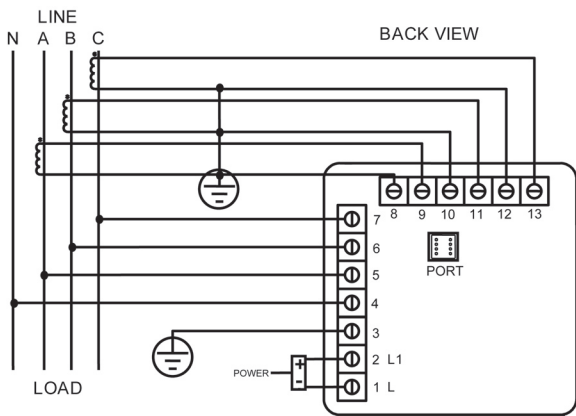
Hardware Installation

Meter Dimensions and Cut-out

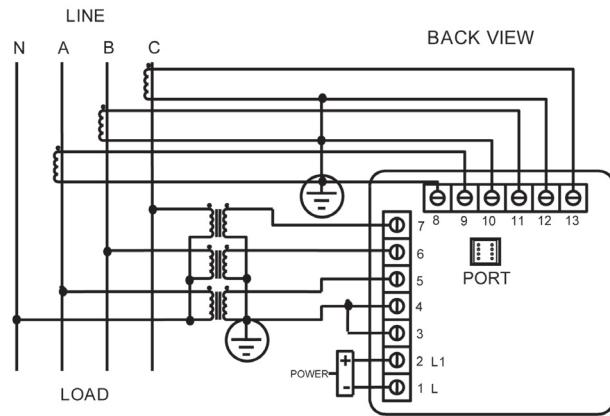


Electrical Installation

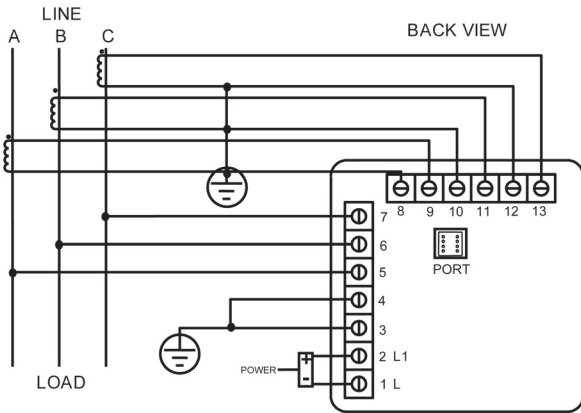
(NOTE: This guide shows some possible wiring configurations. Refer to the meter's manual for additional configurations.)



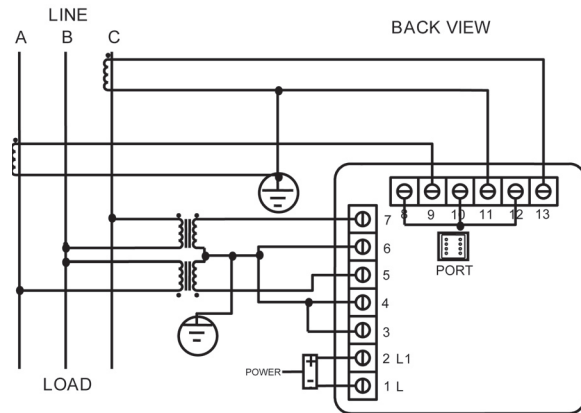
Three-Phase, Four-Wire Wye with Direct Voltage and CTs



Three-Phase, Four-Wire System Wye with CTs and PTs



Three-Phase, Three-Wire System Delta with Direct Voltage and CTs



Three-Phase, Three-Wire Open Delta with two CTs and two PTs

Programming the Meter

NOTES:

- Basic programming information is given here. For step-by-step instructions refer to the meter's User manual, on the enclosed CD.
- Programming tasks are divided into 9 Groups that contain programming Functions. Use the meter buttons to access the Groups/ Functions and program the meter.
- Programmable Function values are always four-digit numeric fields. For example, to enter the number 25, you must enter 0025.

Enter Programming Mode: IMPORTANT! You must be in KW (or MW) mode to program **Mode Indicator and Mode Button** the meter. If the KW(MW) Mode Indicator on the meter display is not lit, press MODE until it is. See the figure on the right.

1. Press ADV until 3 appears in the display.
2. Press SET to multiply the 3 to 333.
3. Digits begin scrolling on the left side of the display. Press SET each time 5 appears, until the display reads 555 on the right side (this is the meter's password).
4. PPP and then P0 appear in the display, indicating that the meter is now in programming mode for Group 0.

Exit Programming Mode: IMPORTANT! You MUST exit Programming Mode to store any changes.

NOTE: The steps to exit Programming Mode depend on your current stage. If you are located at Function level begin at Step 1; if you are located at Group level, begin at Step 3.

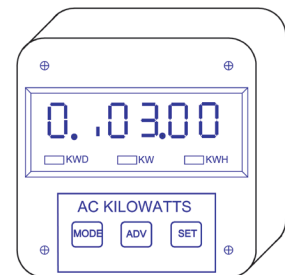
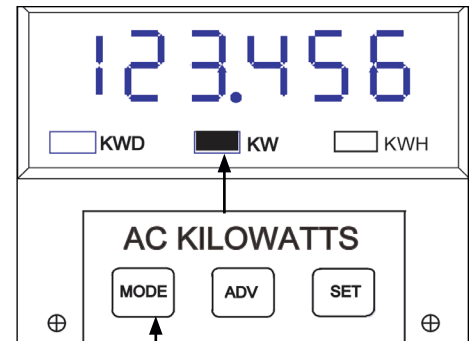
1. Press MODE until the Group number in the display is replaced by E (Exit).
2. Press SET to return to Group level.
3. Press MODE until PE appears in the display.
4. Press SET to exit Programming Mode.

Programming Watt Full Scale Settings

1. Enter programming mode (see instructions above).
2. Press MODE until P1 appears in the display and then press SET to activate GROUP 1: 0 appears to the left, followed by the current Scale Factor, Full Scale, and Decimal point position settings. See the figure on the right.
4. Press SET to begin data entry: a single dash appears on the far right of the display.
5. Press ADV to move the dash Up for Megawatts, or DOWN for Kilowatts and then press SET to store the Scale Factor.
6. Press ADV to move the Decimal point to where you want it and then press SET to store the placement.
7. Press ADV to select the digits for the full Scale setting and press SET to store each digit until all 4 digits are entered. The display shows the new settings for Scale Factor, Full Scale, and Decimal point position.

IMPORTANT! When you are done, follow the Exiting procedure described above.

NOTE: Refer to your meter's User manual on the enclosed CD for additional step-by-step programming instructions.



© **Electro Industries/GaugeTech**

1800 Shames Drive Westbury, New York 11590

Tel: 516-334-0870

FAX: 516-338-4741

www.electroind.com

E104778 V.1.01 042310

© **Electro Industries/GaugeTech** Doc# E104778

Q-2